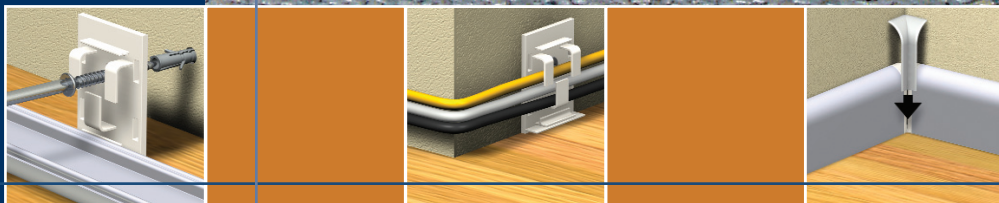


ANCHOR
SKIRTING BOARD
CLIX



- Attaches quickly and simply
- Easy to install on uneven floors
- Cables are hidden behind the skirting board
- Cables can be easily added or removed
- Modern, exclusive, streamlined design
- All parts included (corner pieces, etc.)
- Perfect for the home, office and project markets
- Ideal for every type of floor



Anchor Skirting Board: Clix

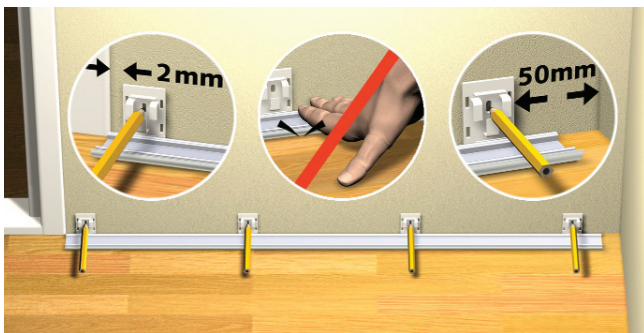
A unique skirting board system that is exceptional in functionality and design

The skirting board is made from high quality aluminium and has a modern look. Together with the corner pieces available in the same colours, an elegant finish to your room is ensured.

Due to the smart click system, the skirting board can be installed in a very short time. You will also be finally rid of the ugly cables running throughout your room.

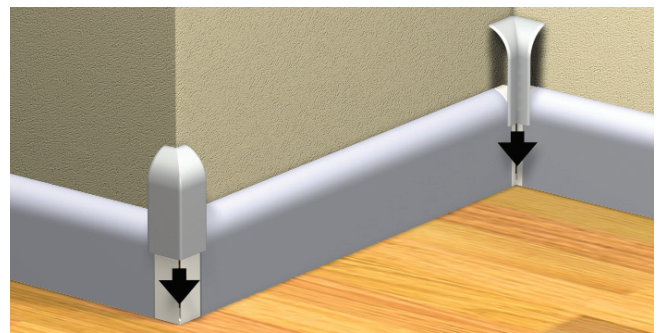
Your cables can be hidden in the hollow space behind the skirting board and in the corners. If you need to add a new cable at another time or need to remove an existing cable, it is no problem: the skirting board can be easily removed and re-attached with just a click.

The click-skirting board is an asset for every interior and can be used with every type of floor.



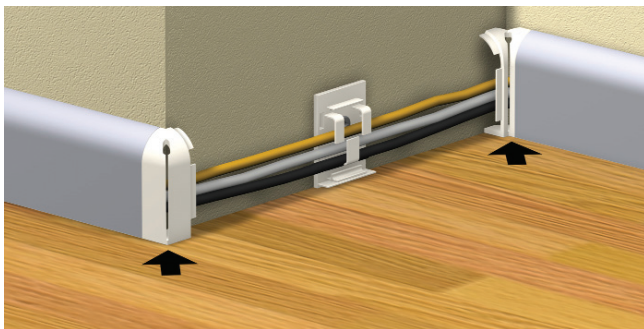
1. Simple installation

The user instructions ensure a quick installation. For uneven floors, there is a handy trick to enable you to place the skirting board there, too (follow the instructions).



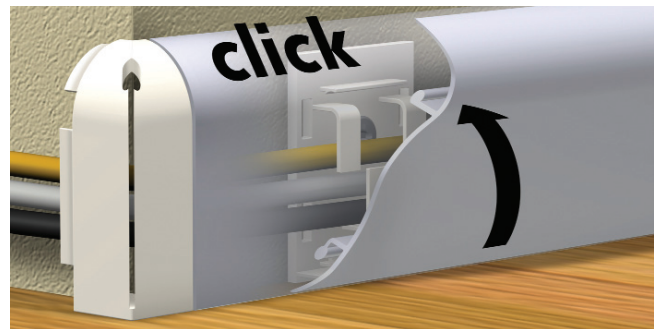
2. Perfectly fitting parts

The plastic parts have an elegant form and create a beautiful finish to the skirting board. Inner and outer corners, end and connecting pieces are available. All parts are in the same colours as the skirting boards.



3. No visible cables

The skirting board and the associated parts are hollow. This makes it possible to place all your cables behind the skirting board. Not a single cable is visible, which makes your room look nicer and less cluttered.



4. Click attachment

The smart click system makes installation simple and ensures that the skirting board can be easily removed in order to add or remove cables.